

Biometric Employee Punch Clock™ with Firebird®

[Product Home Page](#)

Installation Considerations

Before installing the software you need to consider if this installation is right for you. A network installation is recommended if you need:

1. Access to the reports from another machine in the network.
2. Set up multiple check stations within the company.
3. Secure the information so nobody can manipulate the computer clock, except the appropriate person.
4. If you are planning to export your data to another in-house systems, or create custom reports or applications (like a web report).

In all these scenarios, the best way to perform the installation is in two separate machines: One holding the database (Server) and the other one holding the Punch Clock (Client).

Installation Steps

The process to perform the installation has the following steps:

1. Download and install Firebird in the Server Machine.
2. Configure Firebird in the Server Machine.
3. Create the Database that will hold the information.
4. Install the database connectivity on the Client Machine.
5. Install the Biometric Employee Punch Clock 2.0 and perform the connection to the database.

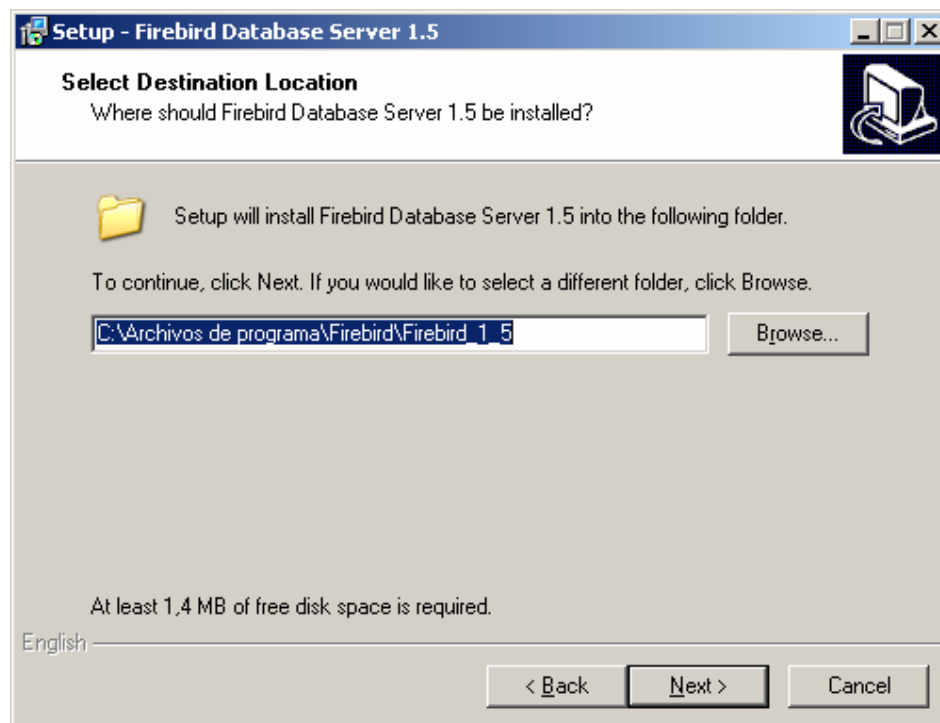
All these steps are described in detail in the next section.

Download FireBird

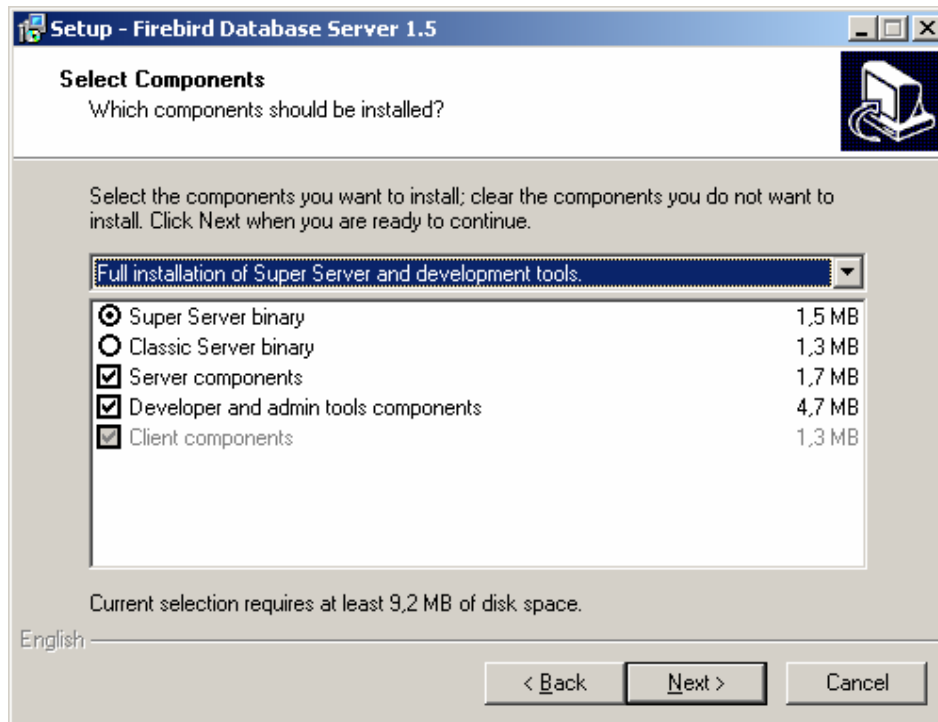
Go to the link <http://firebird.sourceforge.net/index.php?op=files&id=engine> and scroll down to “Win32 Superserver and Client” and click on Firebird-*VersionNumber*-Win32.exe. Then select a mirror near you and click “Download”.

Install FireBird

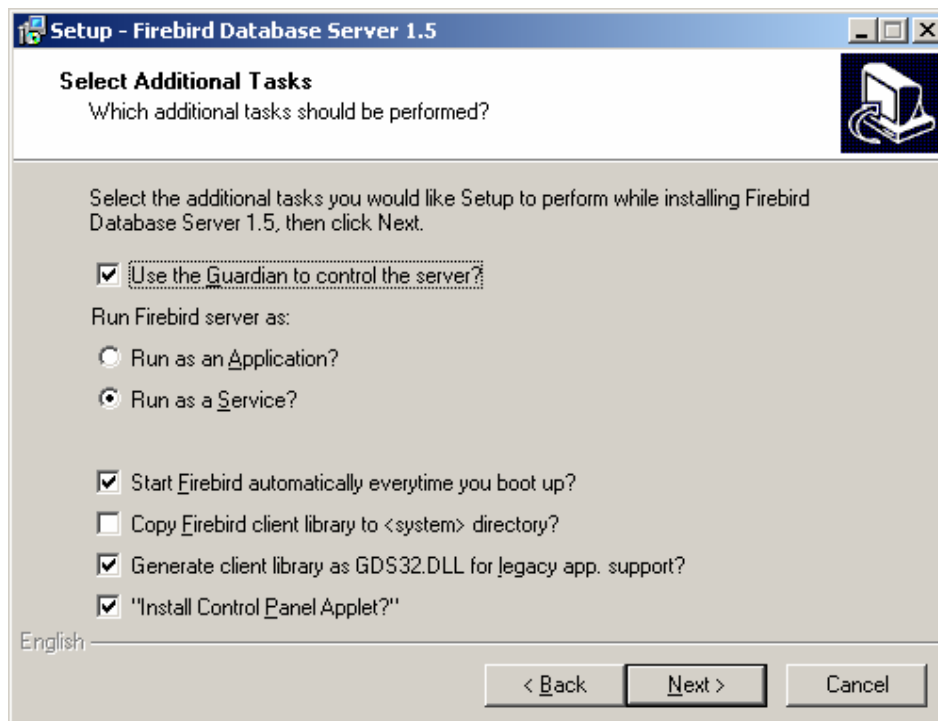
1. Execute the installation file. Select your language and click on “next”.
2. Read the License Agreement and if you accept it, click “Next”.
3. Select your destination location. Normally the default folder will be fine.



4. In the Select Components page, choose Super Server binary, Server components, and Developer and admin tools components like the image below.



5. For "Select Additional Tasks" page use the default configuration.



6. Click next and wait until the installation finishes.

Firebird Configuration

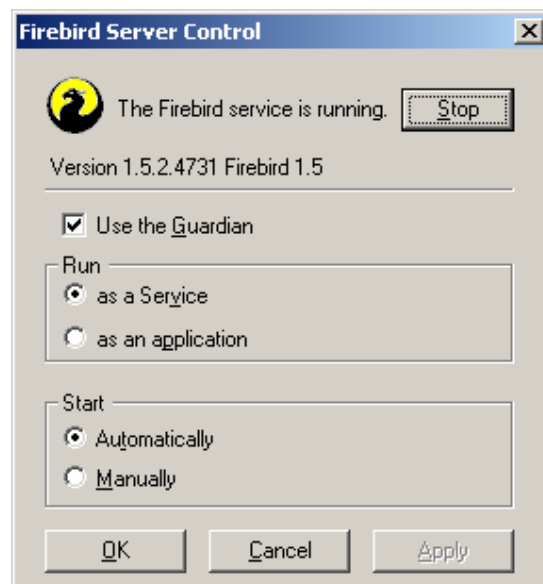
First we need to verify that the Database Server is running.

Go to Windows Control Panel (Start->Configuration->Control Panel) and click on FireBird 1.5 Server Manager. Make sure that it says "The FireBird service is running".

If it is not running, press Start.



It should look like this:



Your Database Server is now configured. The next step is to create the database.

Database Creation

1. Create a directory in your server to store the database file (for example C:\BPData)
2. On the Start Menu->All Programs->FireBird 1_5 click on Firebird ISQL Tool.
3. On the command line type the following line and press enter:

```
CREATE DATABASE 'C:\BPDATA\biopunch2.fdb' user 'SYSDBA' password  
'masterkey';
```

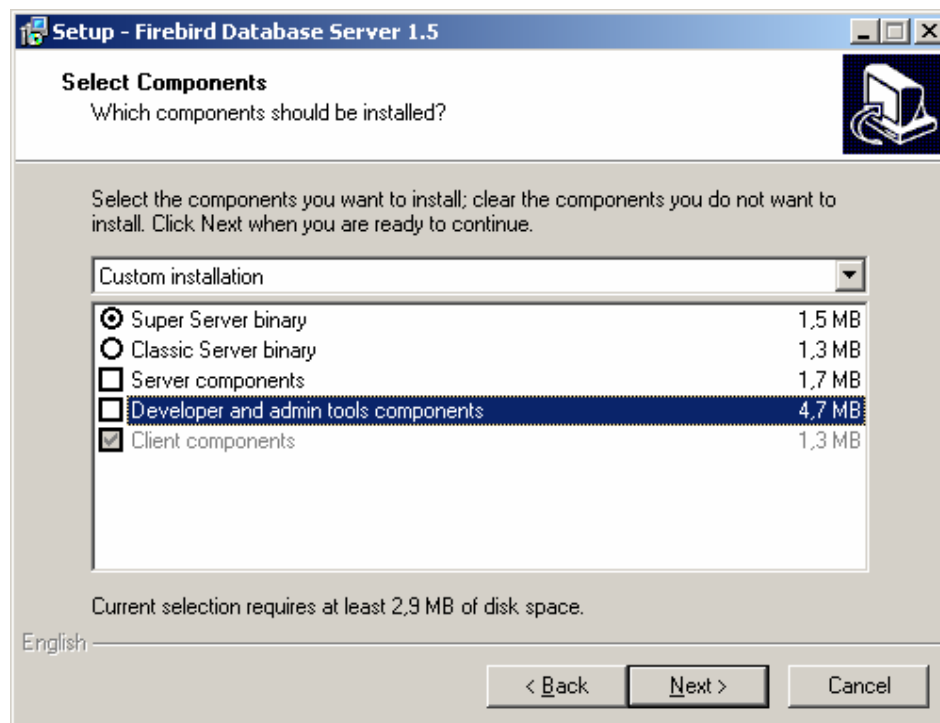
4. Now you have created the Database.

Installing Client Connectivity

Note: If you are installing the Server database and punch station in a single machine, please continue to the next step. The connectivity is already installed.

Run the Firebird installation file again in the client machine but select "Minimum Client Install – no server, no tools."

The Setup Application should look like this:



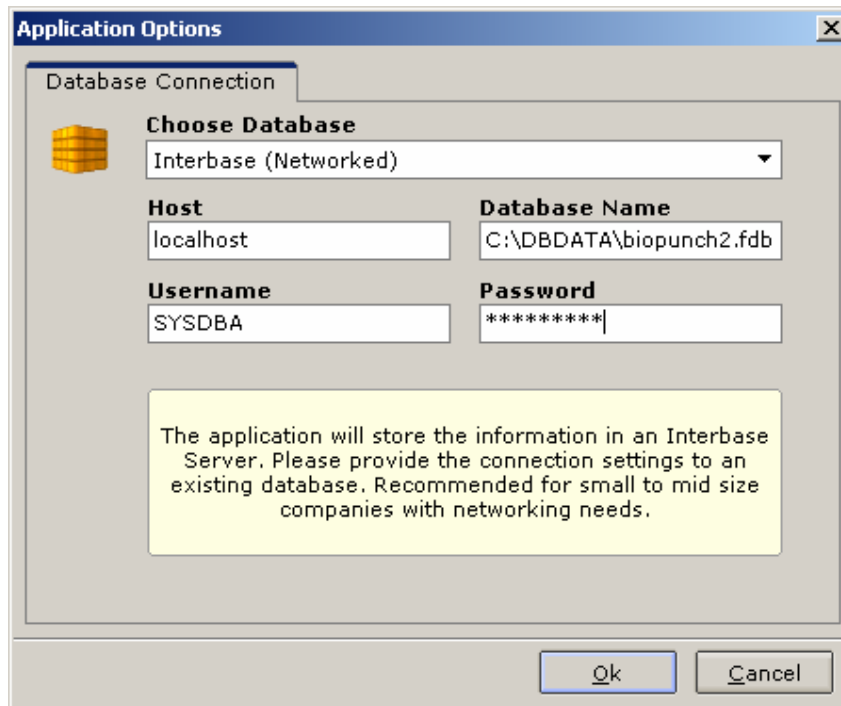
Follow the instructions until the installation is complete.

Installing and Configuring the Punch Station

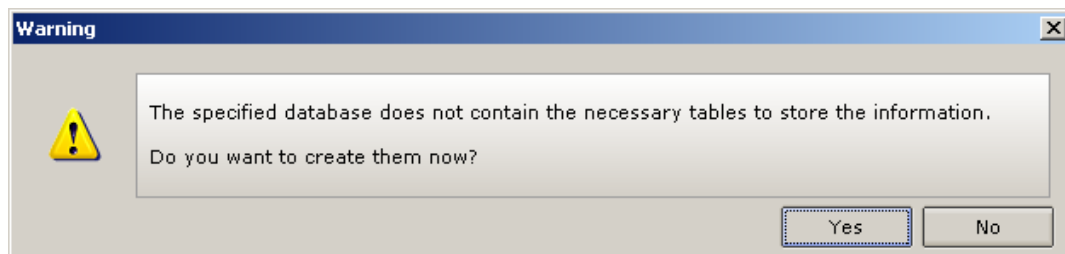
Now we need to configure **Biometric Punch Clock 2.0** to use the database you just created. Install and run the program. In the first step of the Wizard (Database Configuration) do the following:

- a. Select *Interbase Database* in the Choose Database field.
- b. In the host field type the name of the machine where you installed FireBird (for a local installation type "localhost")
- c. For the username and password the default values are: Username: "SYSDBA" and Password: "masterkey" without quotes.

At this point, the window should look like the following:



After the connection has been established correctly, you should see this window:



Press "Yes". This will create all the necessary tables to run the application.

Note: You should have table creator privileges to perform this operation correctly. If you are using the "SYSDBA" user mentioned in this guide, this user has the necessary permissions.

That is it.

Proceed from here with the On-Screen instructions.

VeriTask Contact Information

www.veritasksoftware.com/support.html

support@veritasksoftware.com

Toll Free: 1.888.661.6828