

Biometric Employee Punch Clock™ with Microsoft SQL Server®

[Product Home Page](#)

Installation Considerations

Before installing the software you need to consider if this installation is right for you. A network installation is recommended if you need:

1. Access to the reports from another computer in the network.
2. Set up multiple check in/out stations within the company.
3. Secure for information so nobody can manipulate the computer clock, except the appropriate person.
4. If you are planning to export your data to another in-house system or create custom reports or applications (like a web report).

In all these scenarios, the best way to perform the installation is in two separate machines: One holding the database (Server), and the other one holding the Punch Clock (Client).

Installation Steps

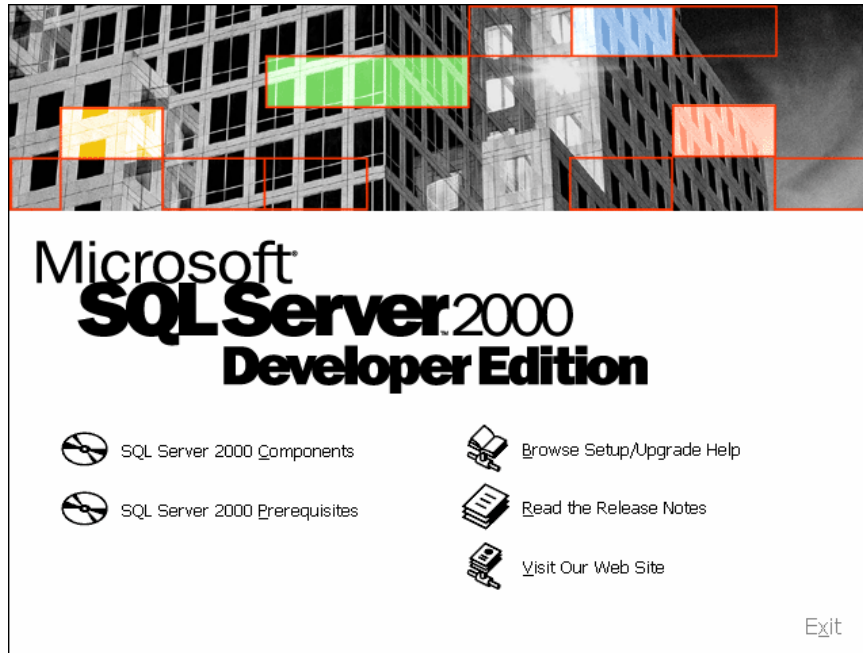
The process to perform the installation has the following steps:

1. Install SQL Server 2000 in the Server Machine.
2. Create the Database that will hold the information.
3. Install the database connectivity on the Client Machine.
4. Install the Biometric Employee Punch Clock 2.0, and perform the connection to the database.

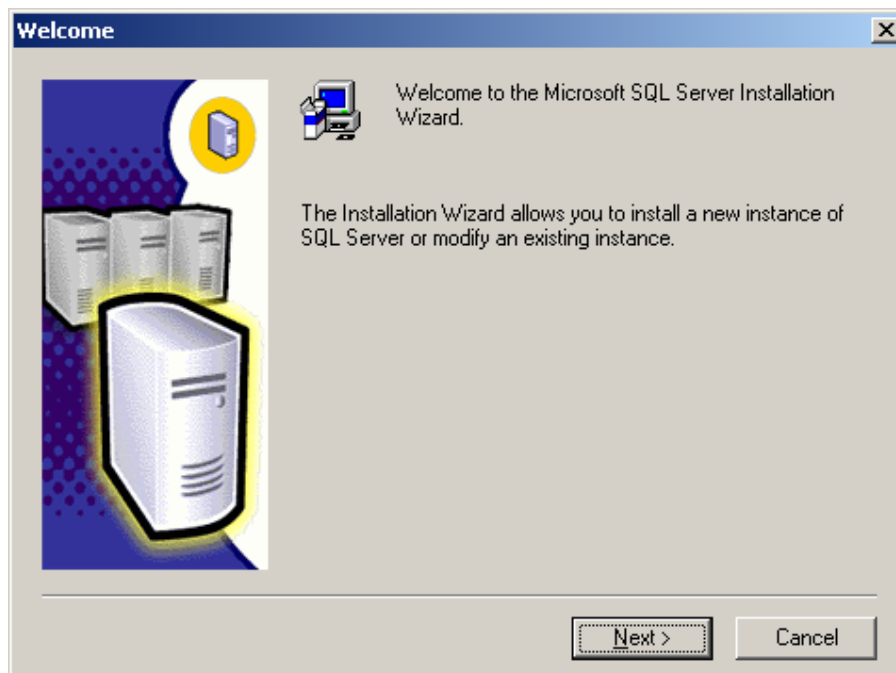
All of these steps are described in detail in the next section.

Install Microsoft SQL Server

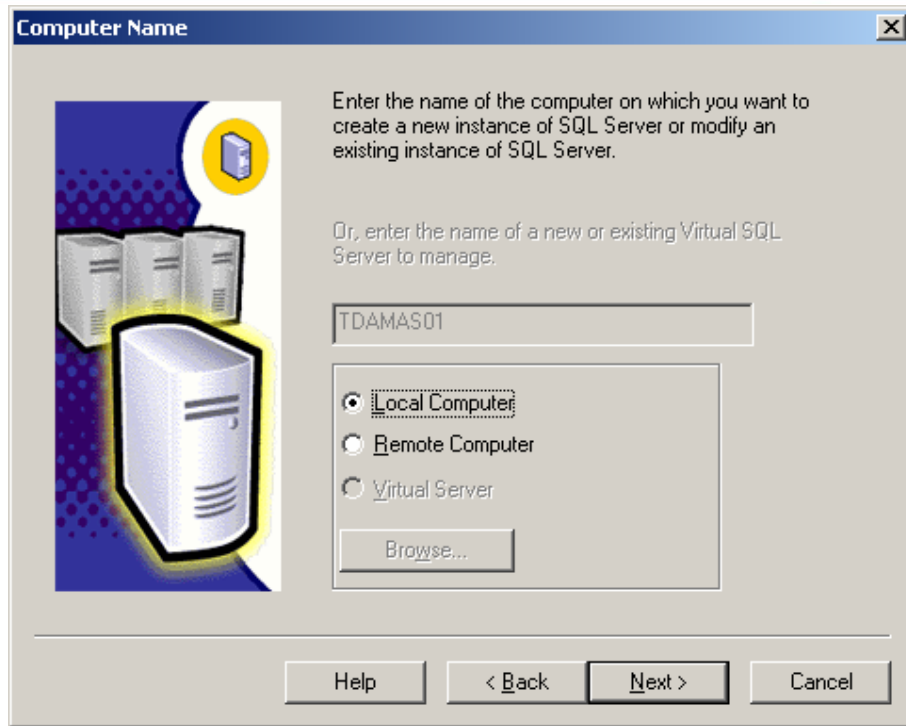
1. Execute the installation file, and choose "SQL Server 2000 Components."



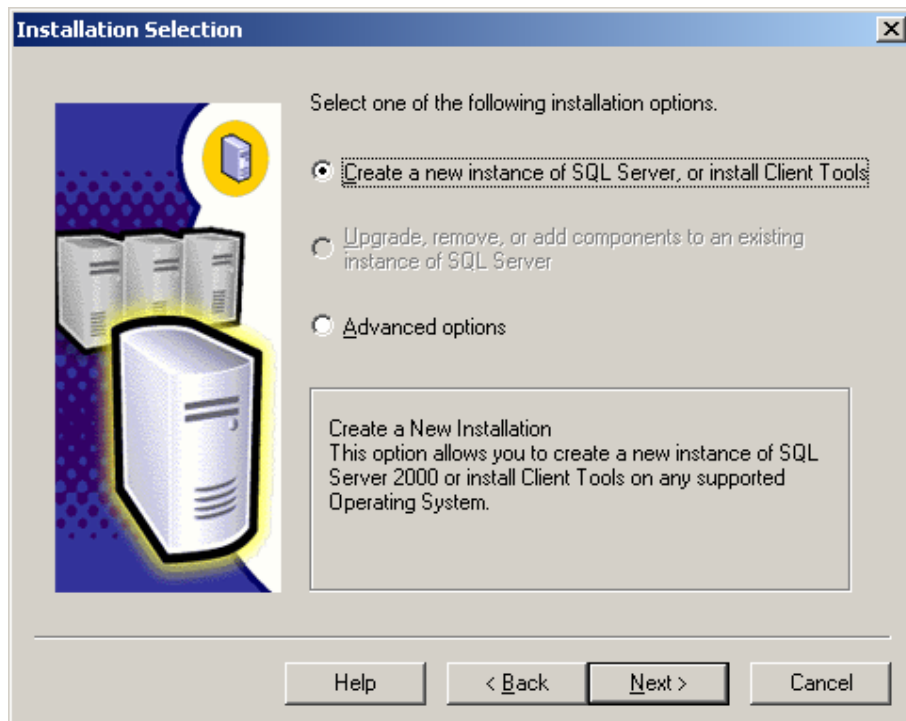
2. On the welcome screen, click "Next."



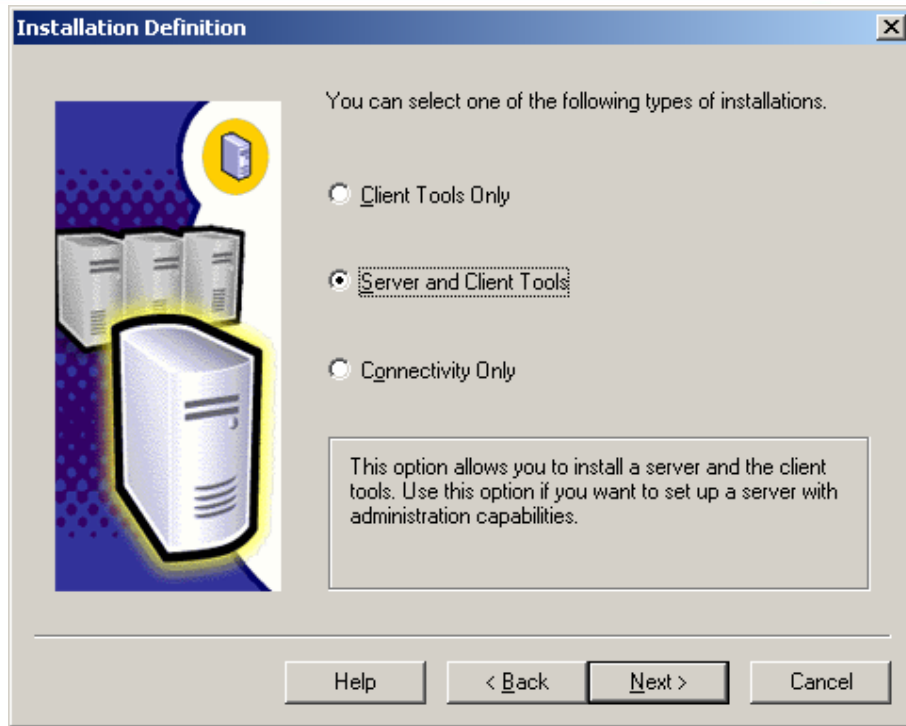
3. Select "Local Computer," and click "Next."



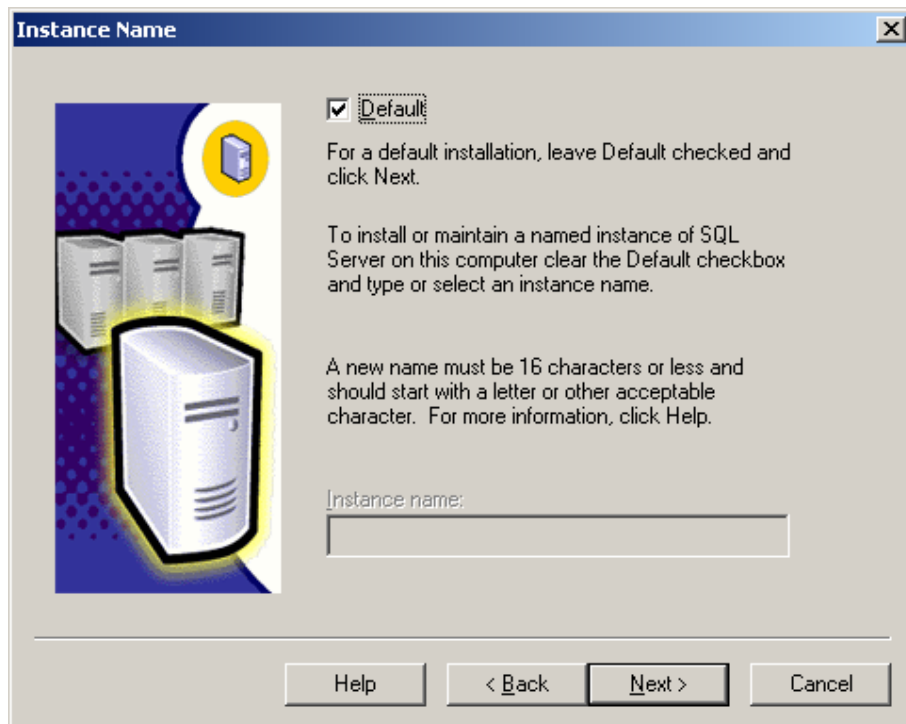
4. Choose "Create a new instance of SQL Server," and click "Next."



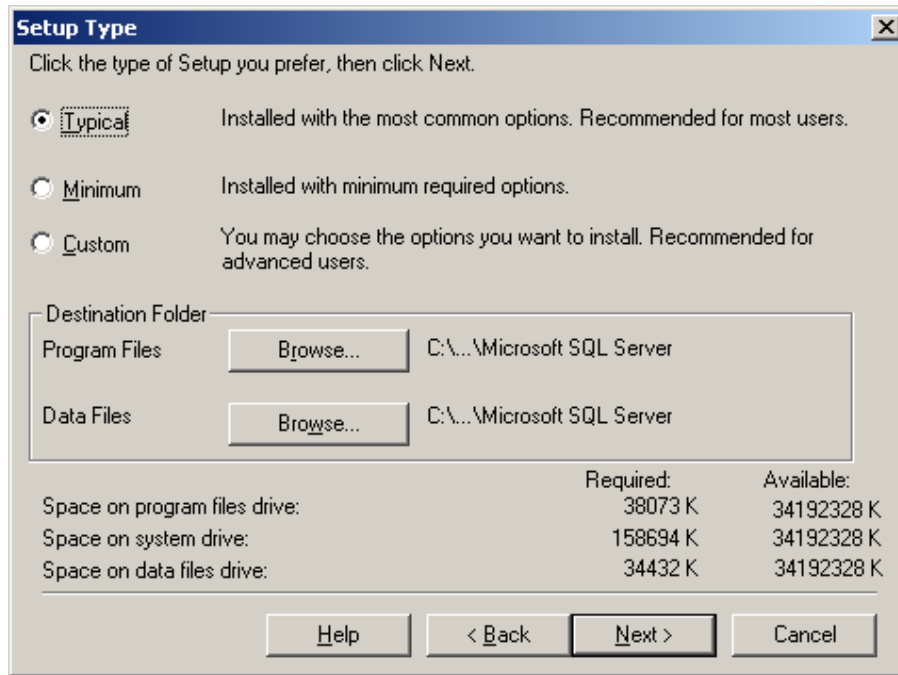
5. Now select "Server and Client Tools," and click "Next."



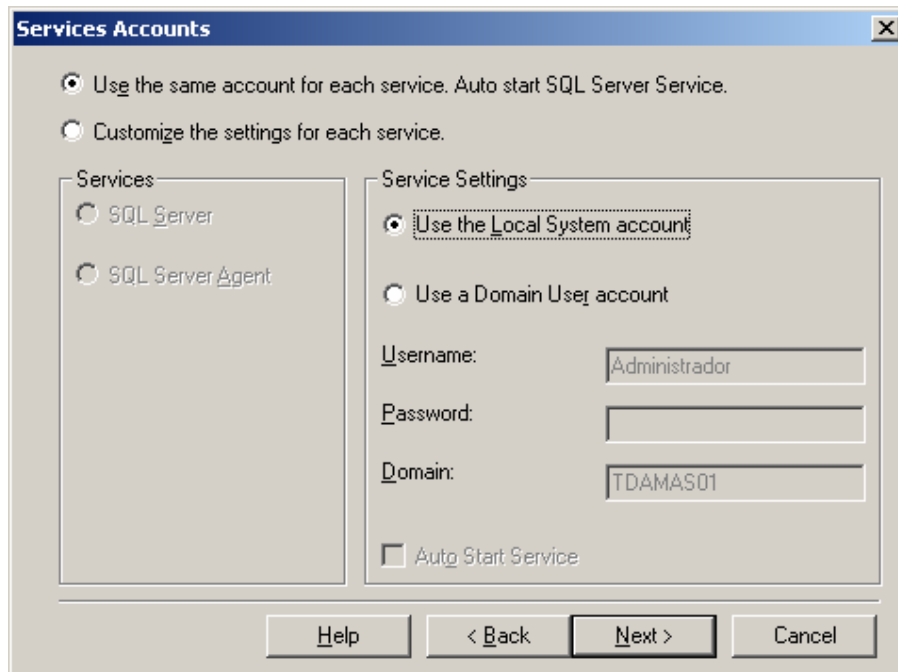
6. Check "Default" if you don't want to install a named instance; otherwise, uncheck it, and type an instance name and click "Next."



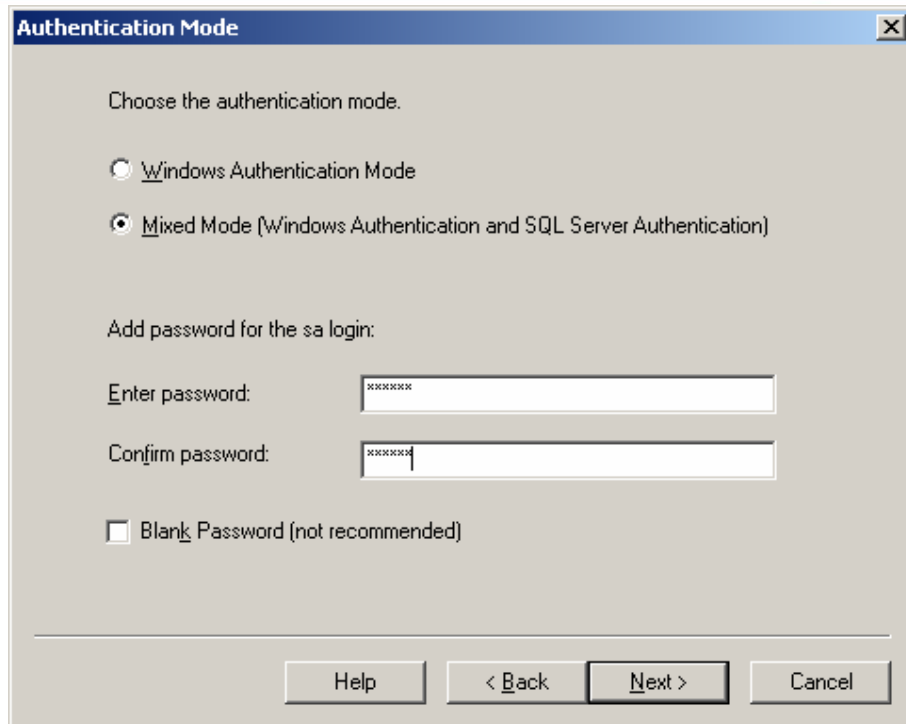
7. Choose "Default" as a setup type.



8. In the firsts options, select "Use the same account for each service," and in "Server Settings," choose "Use the local system account."



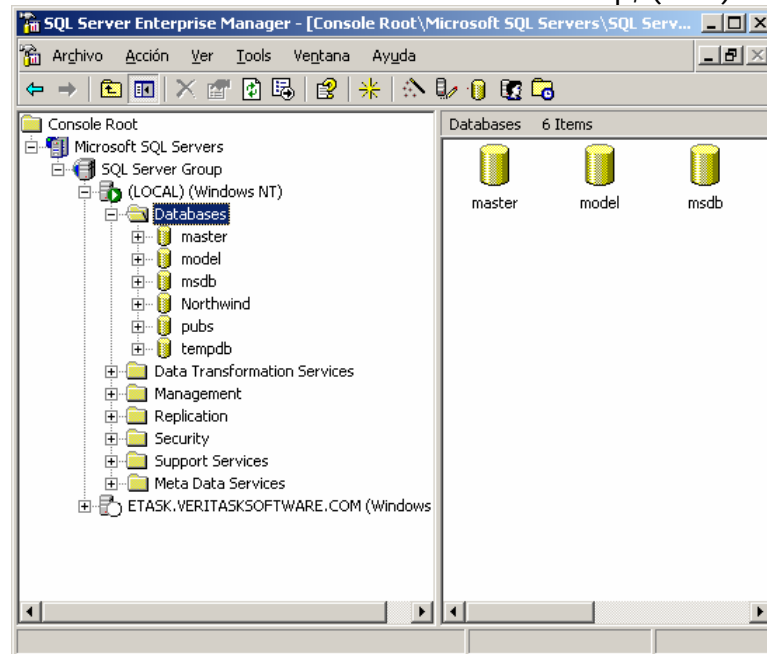
9. In authentication mode, select "Mixed Mode," and type your administrator password for the "sa" login.



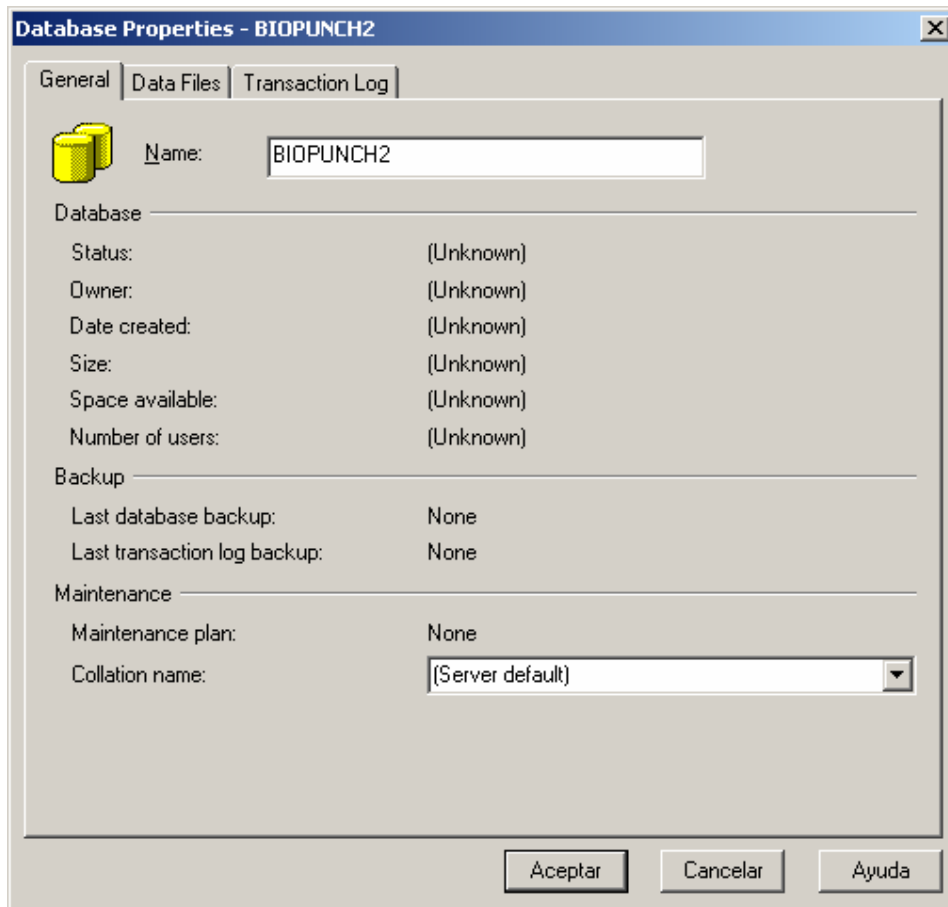
Database Creation

We are going to create the database that will be used by Biometric Employee Punch Clock.

- 1 On the Start Menu -> All Programs -> Microsoft SQL Server, click on "Enterprise Manager."
- 2 Expand the "Microsoft SQL Server and SQL Server Group, (local)" nodes.



3 Right click on the "Database" node, and choose "New database."



4 Type a database name and click "Ok."

5 Now you have created the Database.

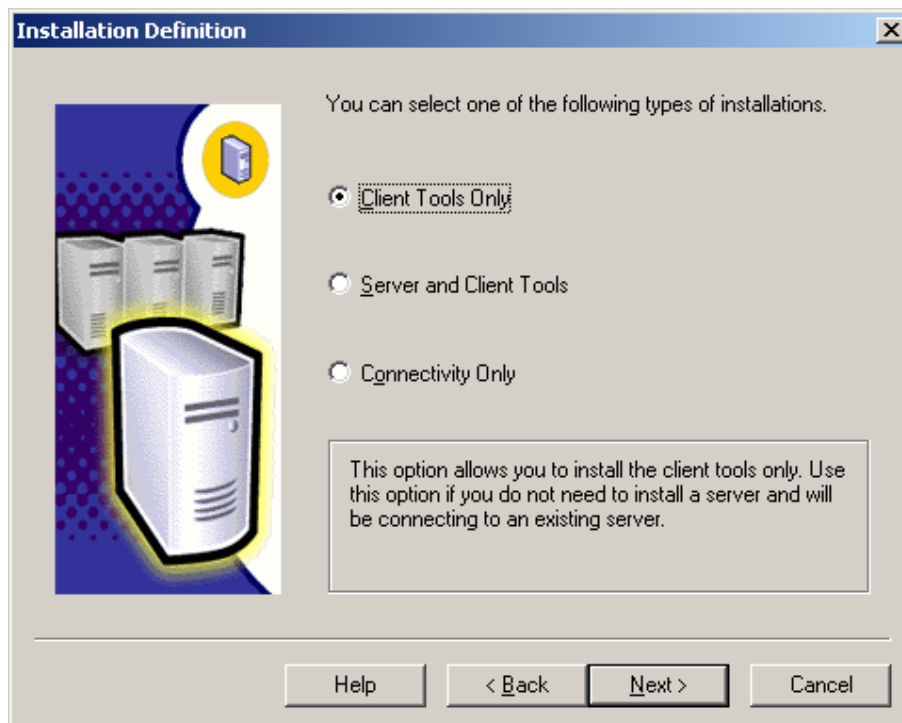
Installing Client Connectivity

Note: If you are installing the Server database and punch station in a single machine, please continue to the next step. The connectivity is already installed.

Run the Microsoft SQL Server 2000 installation file again in the client machine.

In the "Installation Definition" dialog install, choose "Client Tools Only."

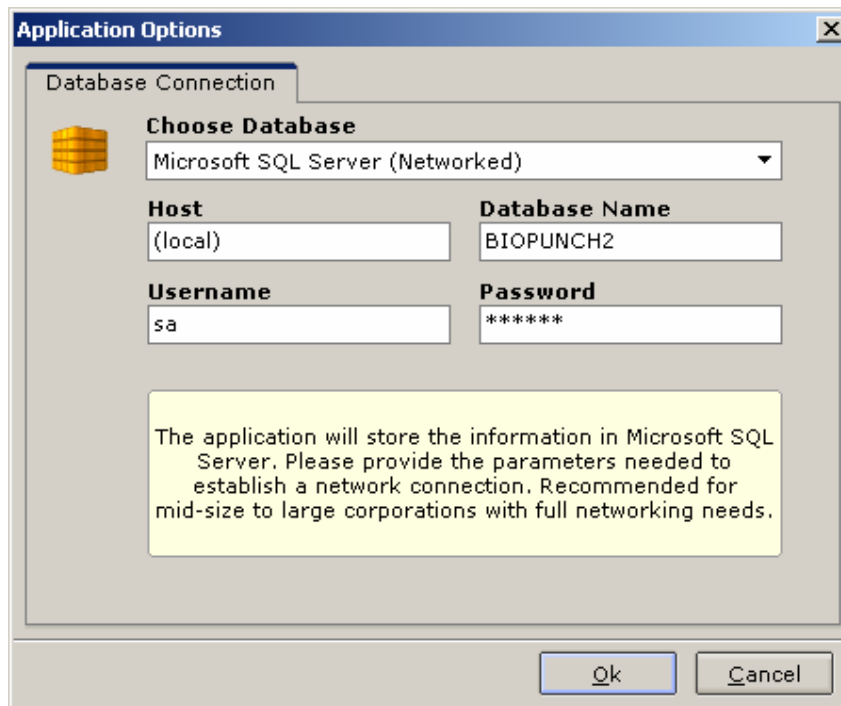
The Setup Application should look like this:



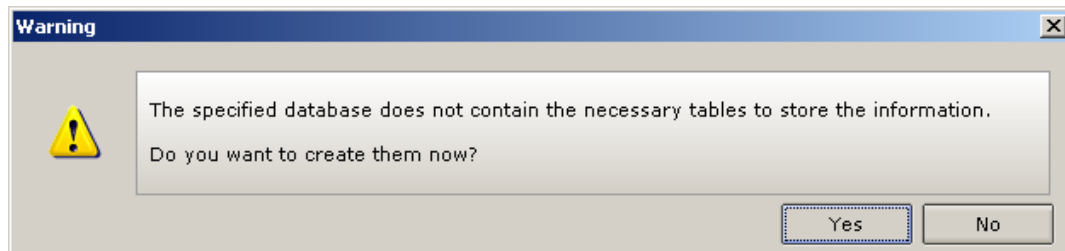
Connection

Now we need to configure **Biometric Punch Clock 2.0** to use the database you just created. Install and run the program. In the first step of the Wizard (Database Configuration), do the following:

- a. On the Database settings, select Microsoft SQL Server 2000 Database.
- b. In the host field, type the name of the machine where you installed Microsoft SQL Server 2000 for a local installation, type "(local)".
- c. The defaults for the username and password, are, Username: "sa", Password: *yourpassword*.



After the connection has been established correctly, you should see this window:



Select "Yes". This will create all the necessary tables to run the application.

Note: You should have table creator privileges to perform this operation correctly.

Proceed from here with the on-screen instructions.

VeriTask Contact Information

www.veritasksoftware.com/support.html

support@veritasksoftware.com

Toll Free: 1.888.661.6828