

## Biometric Employee Punch Clock™ with MySQL®

[Product Home Page](#)

### ***Installation Considerations***

Before installing the software you need to consider if this installation is right for you. A network installation is recommended if you need:

1. Access to the reports from another machine in the network.
2. Set up multiple check stations within the company.
3. Secure for information so nobody can manipulate the computer clock, except the appropriate person.
4. If you are planning to export your data to another in-house system or create custom reports or applications (like a web report).

In all these scenarios, the best way to perform the installation is in two separate machines: One holding the database (Server), and the other one holding the Punch Clock (Client).

### ***Installation Steps***

The process to perform and installation has the following steps:

1. Download and install MySQL in the Server Machine.
2. Configure MySQL in the Server Machine.
3. Create the Database that will hold the information.
4. Install the database connectivity on the Client Machine.
5. Install the Biometric Employee Punch Clock 2.0, and perform the connection to the database.

All of these steps are described in detail in the next section.

## Download MySQL

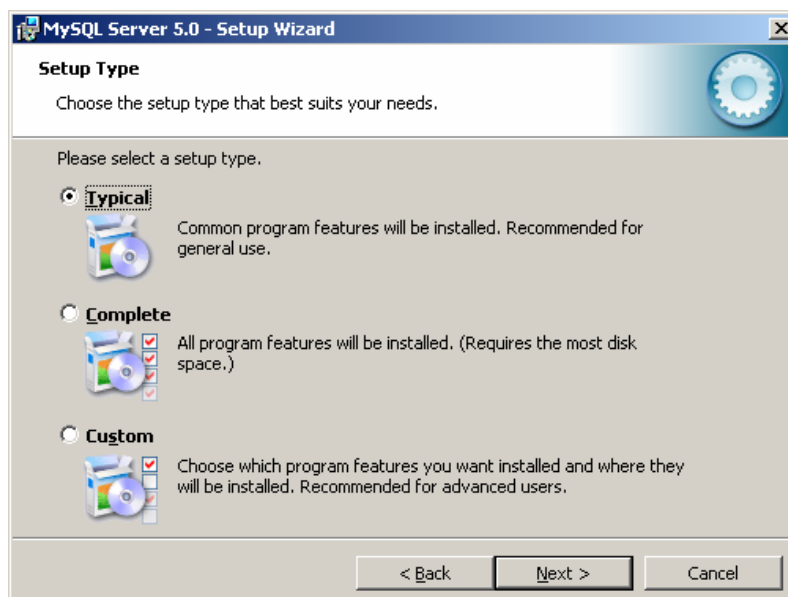
Go to the link <http://dev.mysql.com/downloads/mysql/5.0.html> and scroll down to "Windows (x86)," and click on "Pick a mirror." Now, select a mirror near you and click on "HTTP or FTP."

## Install MySQL

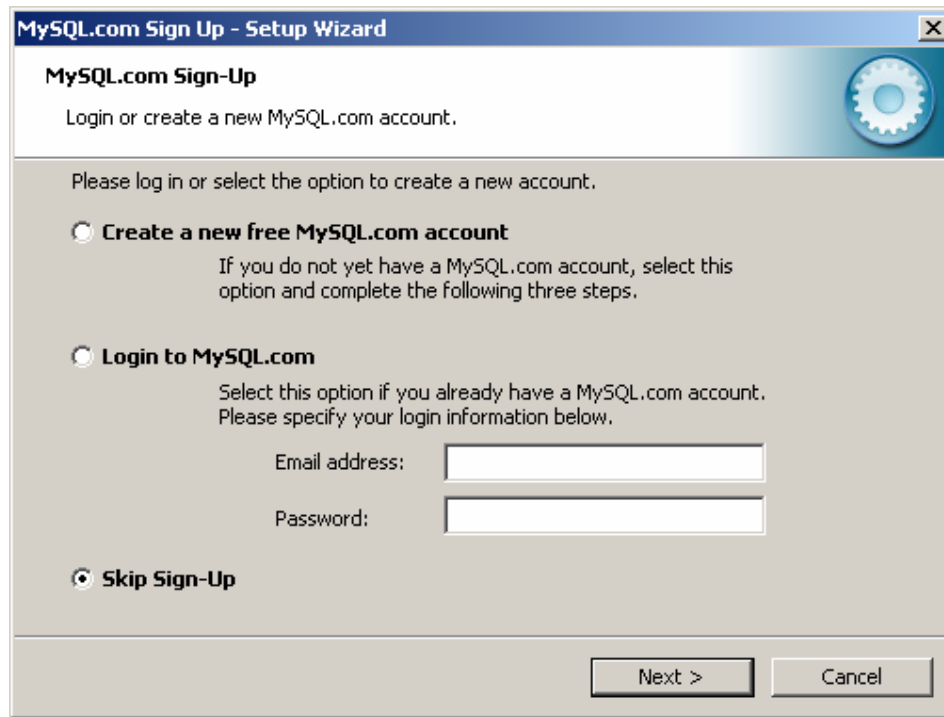
1. Execute the installation file and click "Next."



2. Select "Typical" in the installation type and click "Next."



3. You can skip the Sign-Up if you want.

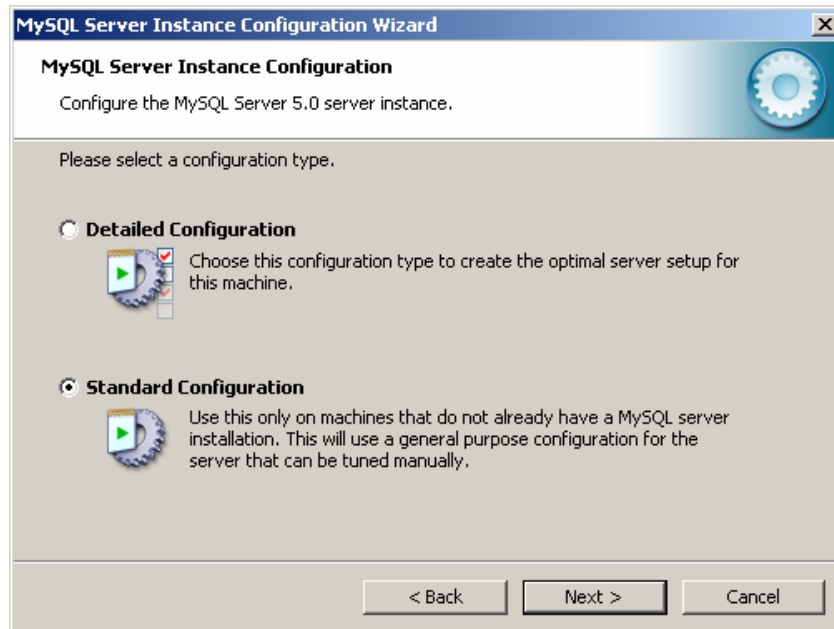


4. Check the "Configure the MySQL Server now" option, and click "Finish."



## MySQL Configuration

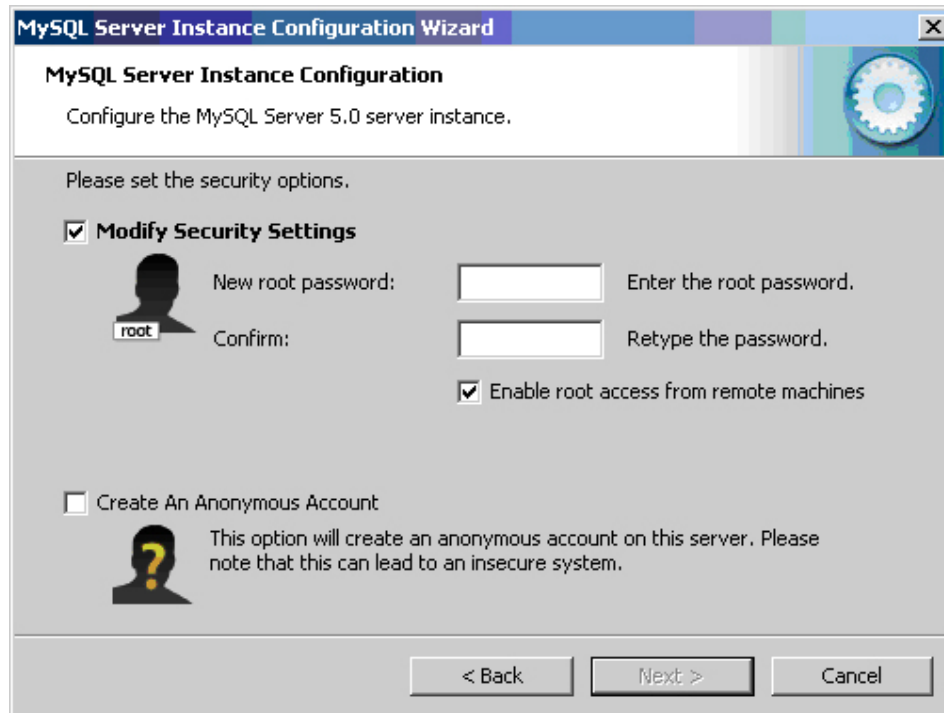
1. Choose Standard Configuration, and click "Next."



2. Check "Install As Windows Service."

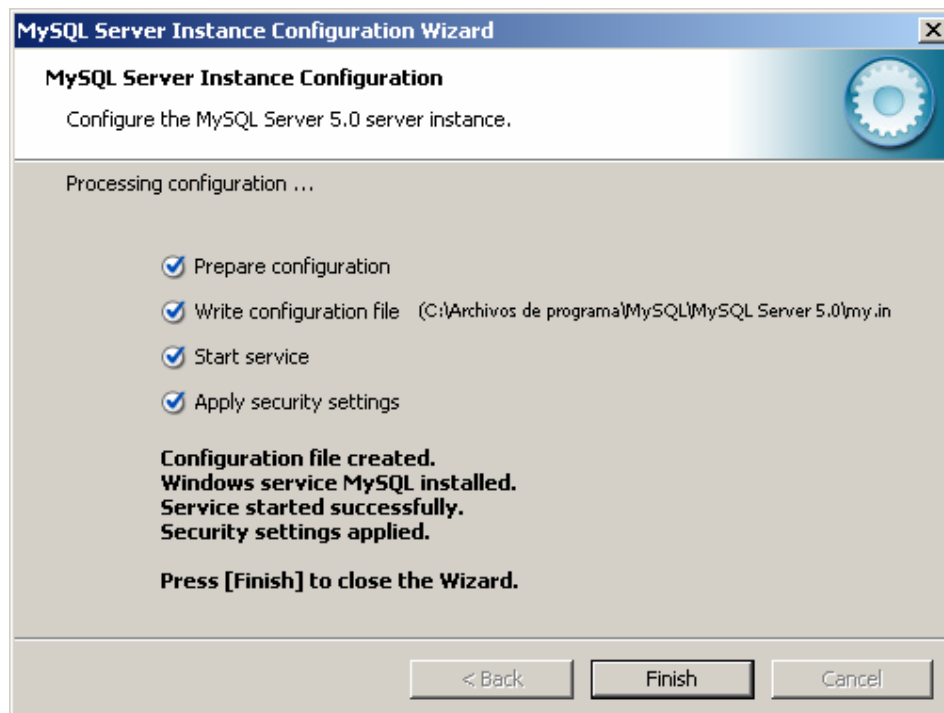


3. Check "Modify Security Settings," and choose a new password for the root account. Make sure to check "Enable root access from remote machines," this setting will grant access to the database to Biometric Punch Clock through the network.



The screenshot shows the 'MySQL Server Instance Configuration Wizard' window. The title bar reads 'MySQL Server Instance Configuration Wizard'. The main heading is 'MySQL Server Instance Configuration' with the subtitle 'Configure the MySQL Server 5.0 server instance.' Below this, it says 'Please set the security options.' There are two main sections: 'Modify Security Settings' which is checked, and 'Create An Anonymous Account' which is unchecked. Under 'Modify Security Settings', there is a 'root' user icon, a 'New root password:' field, a 'Confirm:' field, and a checked checkbox for 'Enable root access from remote machines'. Under 'Create An Anonymous Account', there is a question mark icon and a warning message: 'This option will create an anonymous account on this server. Please note that this can lead to an insecure system.' At the bottom, there are three buttons: '< Back', 'Next >', and 'Cancel'.

4. Click "Finish."

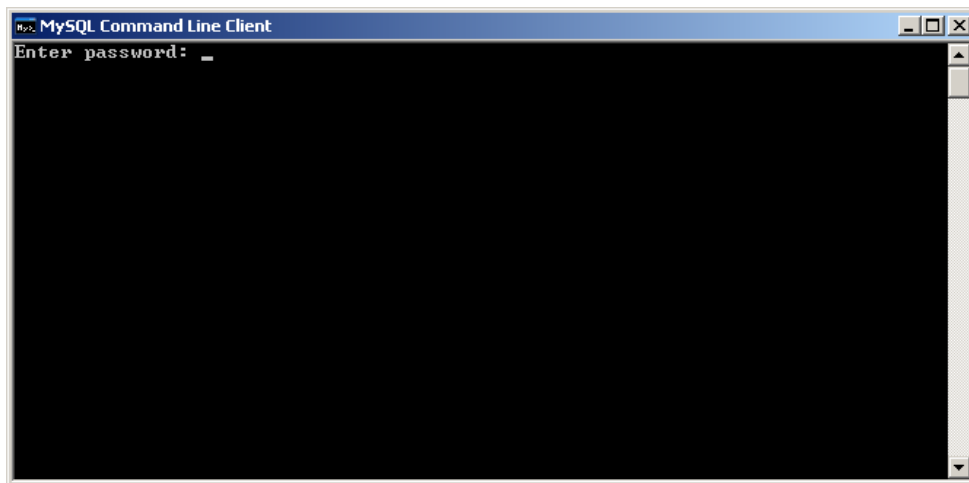


The screenshot shows the 'MySQL Server Instance Configuration Wizard' window at the 'Processing configuration' stage. The title bar reads 'MySQL Server Instance Configuration Wizard'. The main heading is 'MySQL Server Instance Configuration' with the subtitle 'Configure the MySQL Server 5.0 server instance.' Below this, it says 'Processing configuration ...'. There is a list of four steps, all of which are checked: 'Prepare configuration', 'Write configuration file (C:\Archivos de programa\MySQL\MySQL Server 5.0\my.in)', 'Start service', and 'Apply security settings'. Below the list, there is a summary of the completed actions: 'Configuration file created.', 'Windows service MySQL installed.', 'Service started successfully.', and 'Security settings applied.' At the bottom, there is a message: 'Press [Finish] to close the Wizard.' At the bottom of the window, there are three buttons: '< Back', 'Finish', and 'Cancel'.

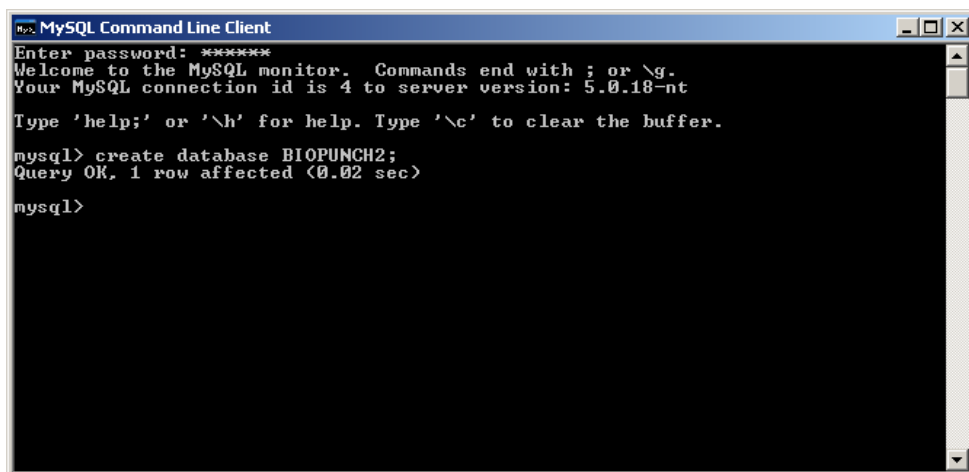
## Database Creation

First we need to verify that the Database Server is running.

1. On the Start Menu->All Programs->MySQL->MySQL Server 5.0 click on MySQL Command Line Client.
2. Type the root password.



3. On the command line type the flowing line.  
CREATE DATABASE BIOPUNCH2;



4. Now you have created the Database.

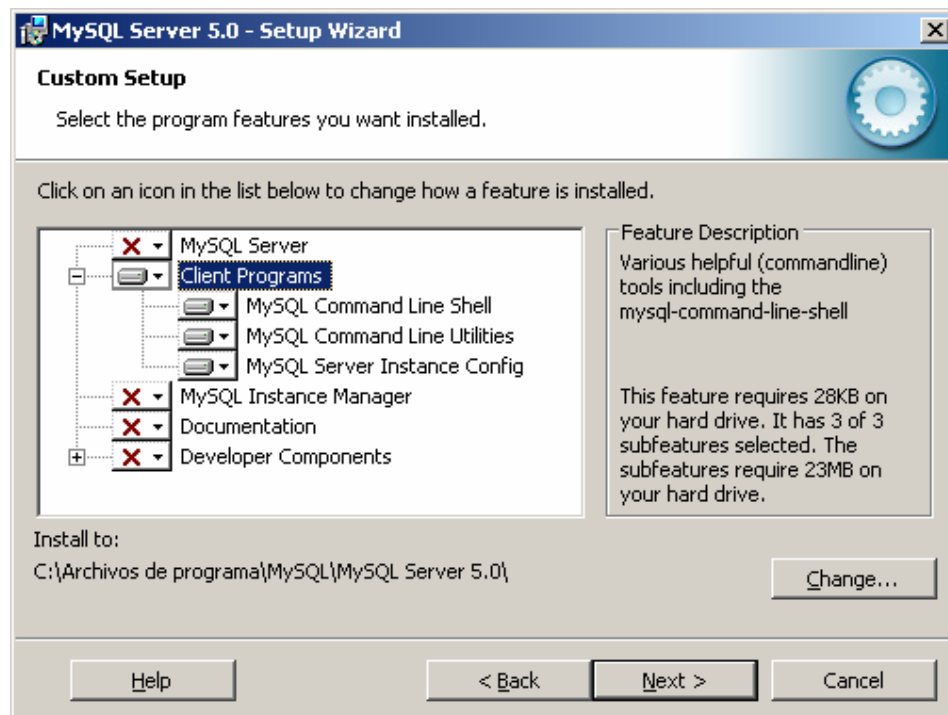
## Installing Client Connectivity

**Note:** If you are installing the Server database and punch station in a single machine, please continue to the next step. The connectivity is already installed.

Run the MySQL installation file again in the client machine but select “Custom Setup Type.”

In the “Custom Setup” dialog install only the “Client Programs.”

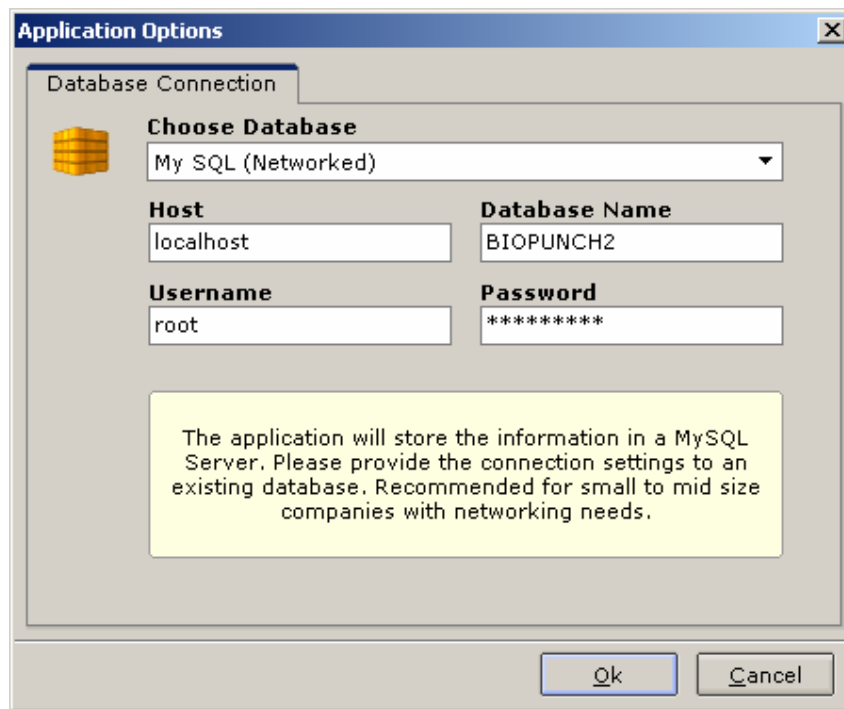
The Setup Application should look like this:



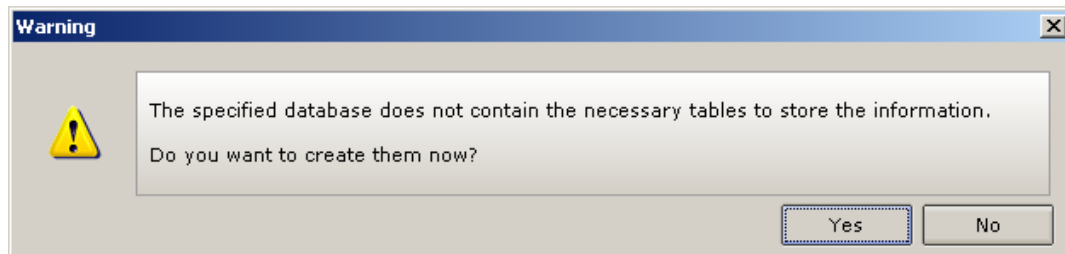
## Connection

Now we need to configure **Biometric Punch Clock 2.0** to use the database you just created. Install and run the program. In the first step of the Wizard, (Database Configuration) do the following:

- a. In the Database settings select MySQL Database.
- b. In the host field type the name of the machine where you installed MySQL (for a local installation type "localhost").
- c. The defaults for the username and password, are, Username: root, and Password: *yourpassword*.



After the connection has been established correctly, you should see this window:





Select "Yes." This will create all the necessary tables to run the application.

**Note:** You should have table creator privileges to perform this operation correctly. If you are using the "root" user mentioned in this guide, this user has the necessary permissions.

Proceed from here with the on-screen instructions.

### **VeriTask Contact Information**

[www.veritasksoftware.com/support.html](http://www.veritasksoftware.com/support.html)

[support@veritasksoftware.com](mailto:support@veritasksoftware.com)

Toll Free: 1.888.661.6828